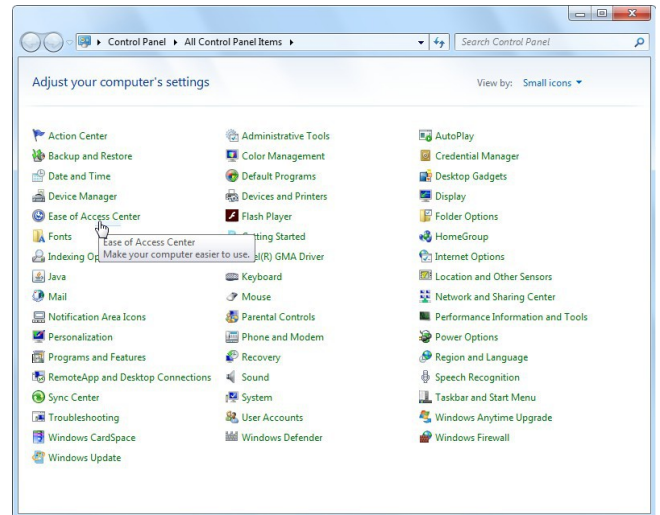
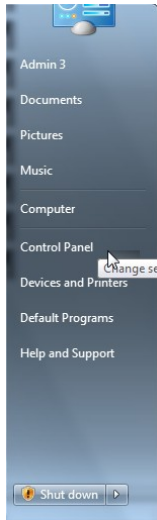


Ease of Access Centre – Aural (Windows 7)

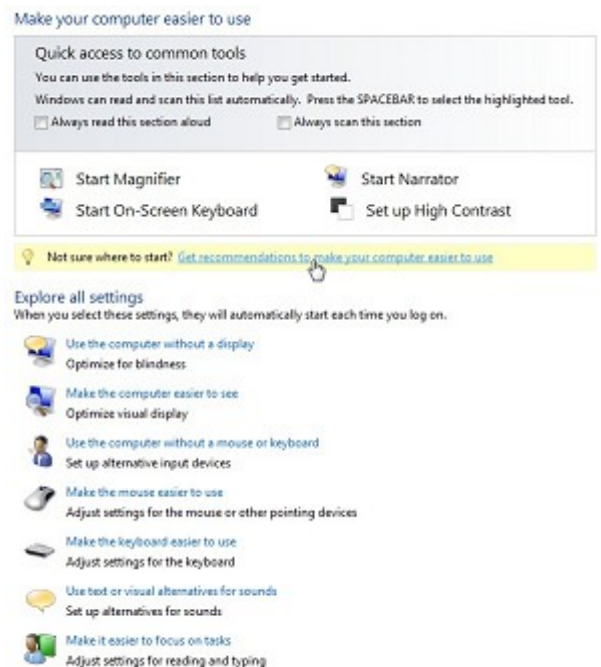
1. There are a number of Accessibility Options available within Windows 7 to help the deaf or hard of hearing. These are to be found in various ways.

2. Either

left-click on **Control Panel** on the **Start Bar**, and on **Ease of Access Centre**




3. This allows you to select facilities relevant to aural impairment but if you're not sure then left-click on "Get recommendations to make your computer easier to use". This accesses the questionnaire and filling this out will point to whichever tools are recommended for your needs or those of the person you are trying to help. You can choose to select or not select these. In particular the third section addresses aural (hard of hearing)



PTO

problems. When you have completed these a list of Recommended Settings appears which you can choose to select.

4. Or

simply left-click the Windows logo key  +U and the **Ease of Access Centre** will open.

5. Facilities available to help aural problems


These can be accessed by

Either

following links as above


Or

left-clicking on one of the selections in the **Ease of Access Centre** such as "Use text or visual alternatives for sounds"

 Use text or visual alternatives for sounds
Set up alternatives for sounds

One of these is "Turn on visual notifications for sounds" **Sound Sentry** which displays

Use visual cues instead of sounds

 Turn on visual notifications for sounds (Sound Sentry)

a visual warning, such as a flashing program window, when your computer's built-in speaker makes a sound. There are various options to choose by left-clicking in a button.

There is also an option to turn on text captions for spoken dialogue.

You can also follow the link "Audio Devices and Sound Themes" which gives options for Playback, Recording, Sounds and Communications.

See also

 Audio Devices and Sound Themes
[Learn about additional assistive technologies online](#)

6. Choose from the above to meet your particular needs or try the Questionnaire by left-clicking on "Get recommendations to make your

 Not sure where to start? [Get recommendations to make your computer easier to use](#)

computer easier to use”.

Left-click on each item that applies to you and then left-click on Next to get the next selection. After the last selection left-click on Done and a series of recommendations is listed which you can then implement by left-clicking on the relevant items and then on OK.

7. At the end you can find other information and settings re Ease of Access on the web for Windows 7 by following the links to “Learn about additional assistive technologies online” where there are guides available but check they are for Windows 7.

See also [Learn about additional assistive technologies online](#)

8. There are other forms of Features for people who are deaf or hard of hearing available which may be of more use and provide more advanced functionality for daily use.

Search the web (eg www.abilitynet.org.uk/mcmw/) or seek advice from your usual source of help with these and with other Accessibility options to help with aural impairment.